



# MONTHLY MEMBERSHIP PROGRESS REPORT

District 411 B

Results as of: 5/31/2017

GMT: Amarpreet Sembhi

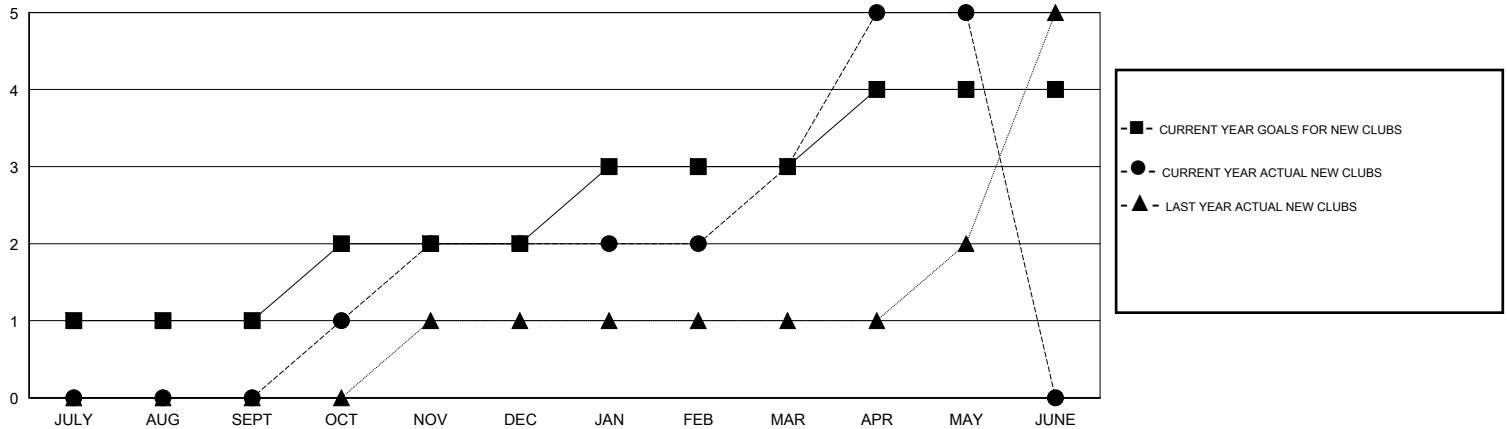
LOCATION TANZANIA

GMT CA

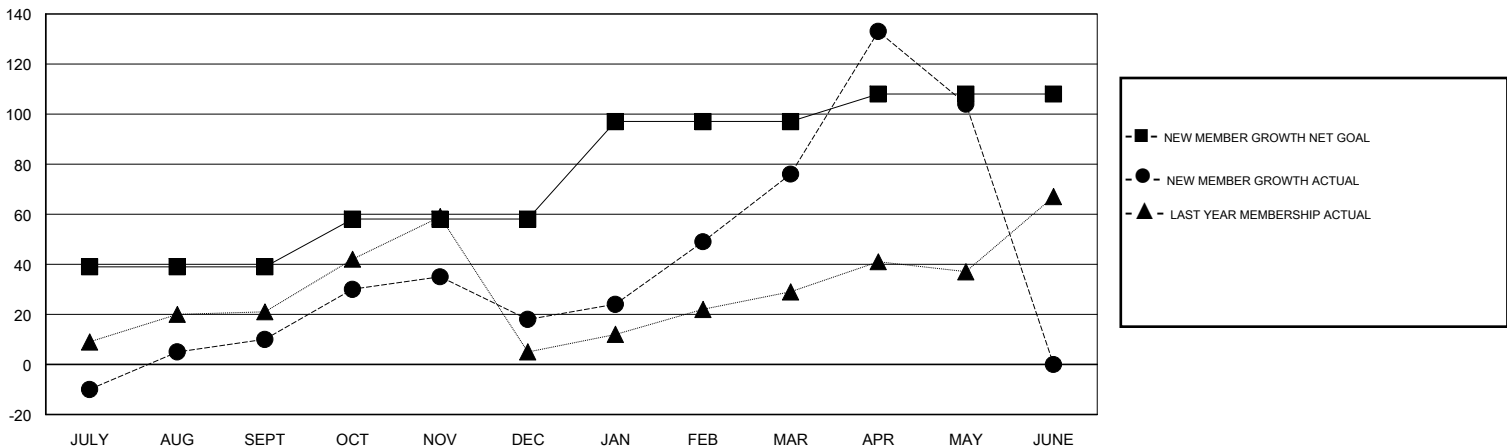
Clubs			
RESULTS FOR 2016-2017			
QUARTER	NEW CLUB GOAL	NEW CLUBS	DROPPED CLUBS
JULY/AUG/SEPT	1	0	0
OCT/NOV/DEC	1	2	2
JAN/FEB/MAR	1	1	0
APR/MAY/JUNE	1	2	0

Members			
RESULTS FOR 2016-2017			
QUARTER	NEW MEMBER GROWTH NET GOAL (not reinstated or transfers)	NEW MEMBER GROWTH ACTUAL (not reinstated or transfers)	DROPPED MEMBERS ACTUAL (including transfers)
JULY/AUG/SEPT	39	86	76
OCT/NOV/DEC	19	68	60
JAN/FEB/MAR	39	70	12
APR/MAY/JUNE	11	67	39

GOALS AND ACTUAL NEW CLUBS CUMULATIVE



GOALS AND ACTUAL MEMBERS CUMULATIVE



DROPPED CLUBS: 2	37 CLUBS OF 53 ADDED 1 OR MORE NEW MEMBERS	<u>GENDER DISTRIBUTION</u>	
DROPPED MEMBERS		MALE	973 (66.78%)
DECEASED	<a href="#">CLICK HERE FOR CUMULATIVE MEMBERSHIP DATA</a>	FEMALE	484 (33.22%)
CLUB CANCELLED		TOTAL FAMILY UNIT MEMBERS	399
OTHER		FAMILY MEMBERS PAYING HALF DUES	223
TOTAL			